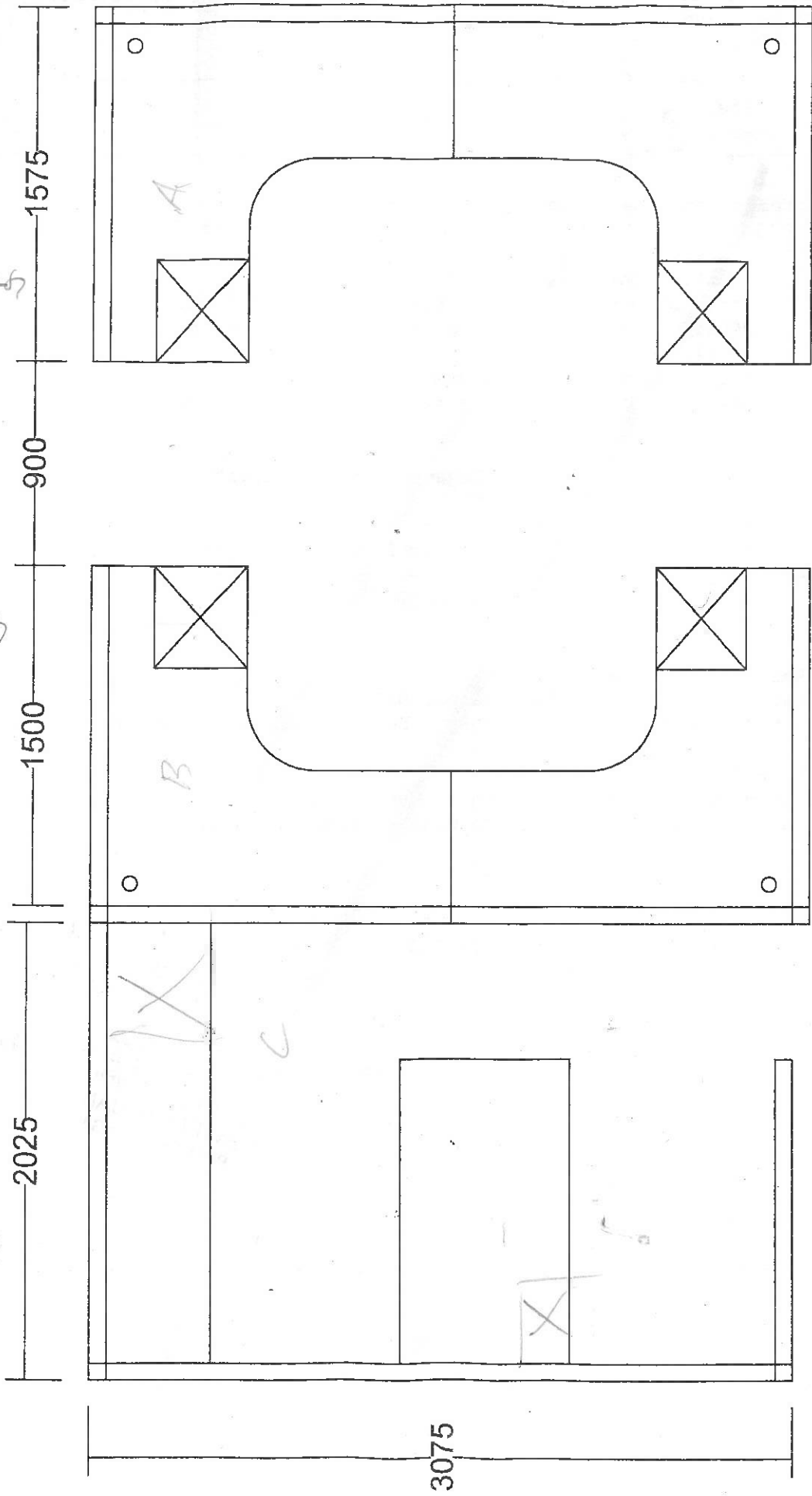


BHARAT HEAVY ELECTRICALS LTD
Electro Porcelains Division
Bangalore 560012

Modular Office Furniture for CBU

Sketch No : WHEC -0004



1515658
1515658
1515658

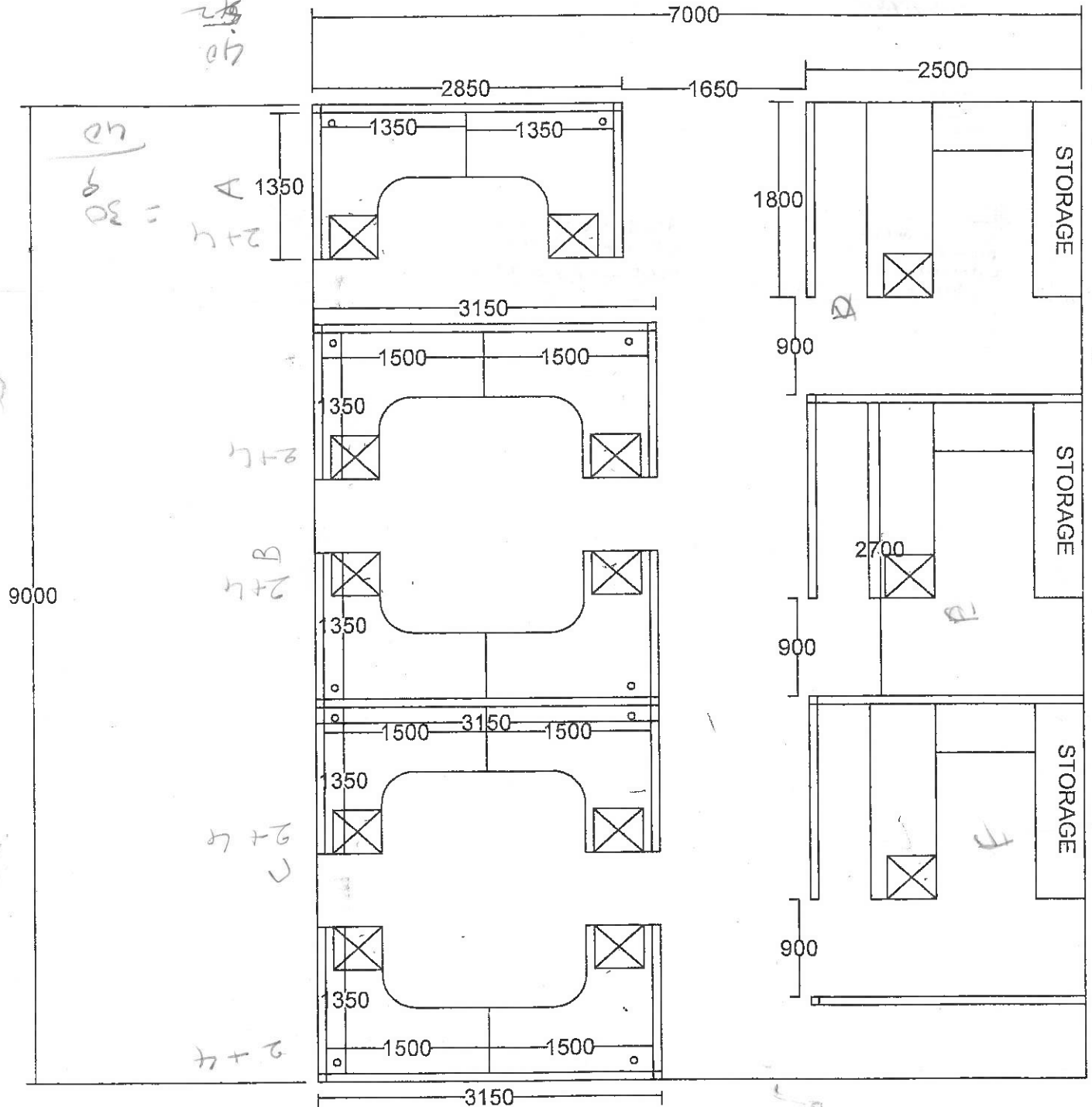


BHARAT HEAVY ELECTRICALS LTD
 Electro Porcelains Division
 Bangalore 560012

Modular Office Furniture for WEX

Sketch No : WHEC -0002

8hl
 22
 24
 22
 40



Handwritten notes on the left side of the drawing:

- 2+4 = 30
- 2+4
- 2+4
- 2+4
- 2+4
- 2+4

WORKSTATION 1500 X1350 X1200HT
 WITH PEDASTAL AND KEY BOARD

CABIN 2400 X2500 X1500HT
 WITH MAIN TABLE, SIDE TABLE
 ,BACK STORAGE AND PEDASTAL

WEX OFFICE

1000

$$\frac{52}{10} = 42+$$

A

2+4

2+4

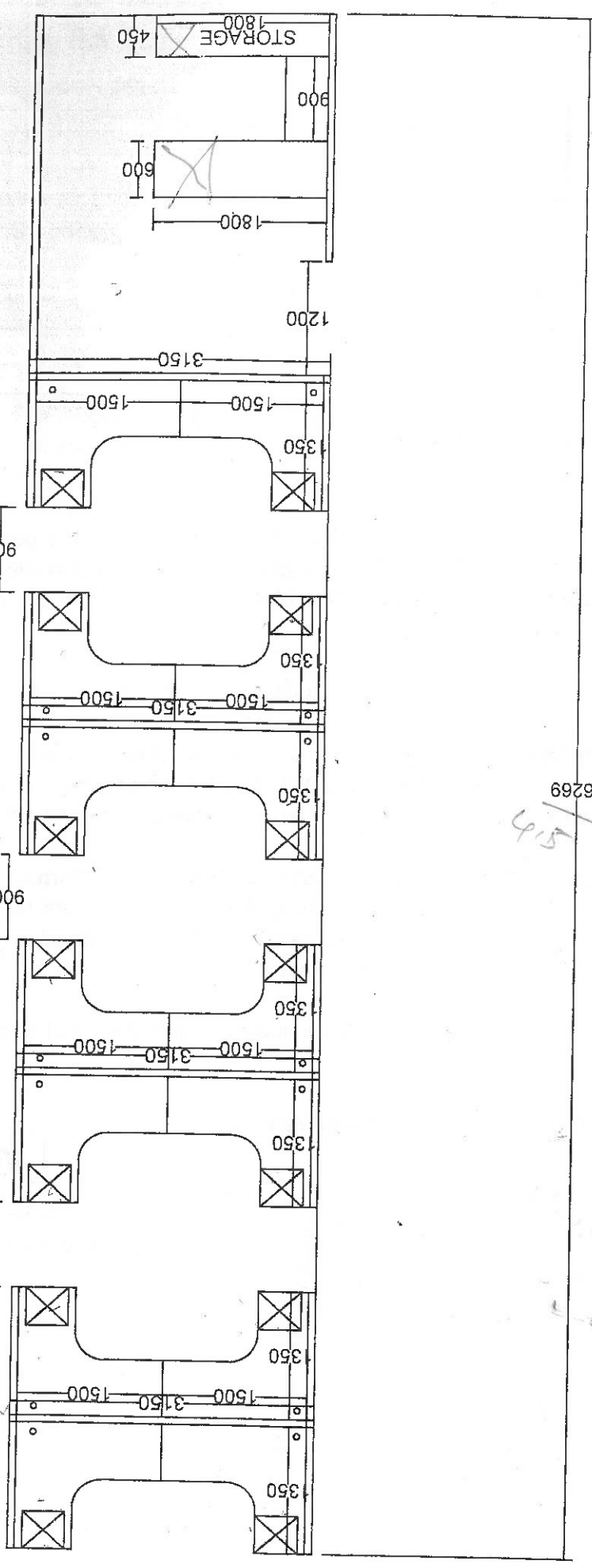
2+4

2+4

2+4

2+4

2+4



16269

4.5



BHARAT HEAVY ELECTRICALS LTD
 Electro Porcelains Division
 Bangalore 560012
 Modular Office Furniture for ENGG

Sketch No : WHEC -0003

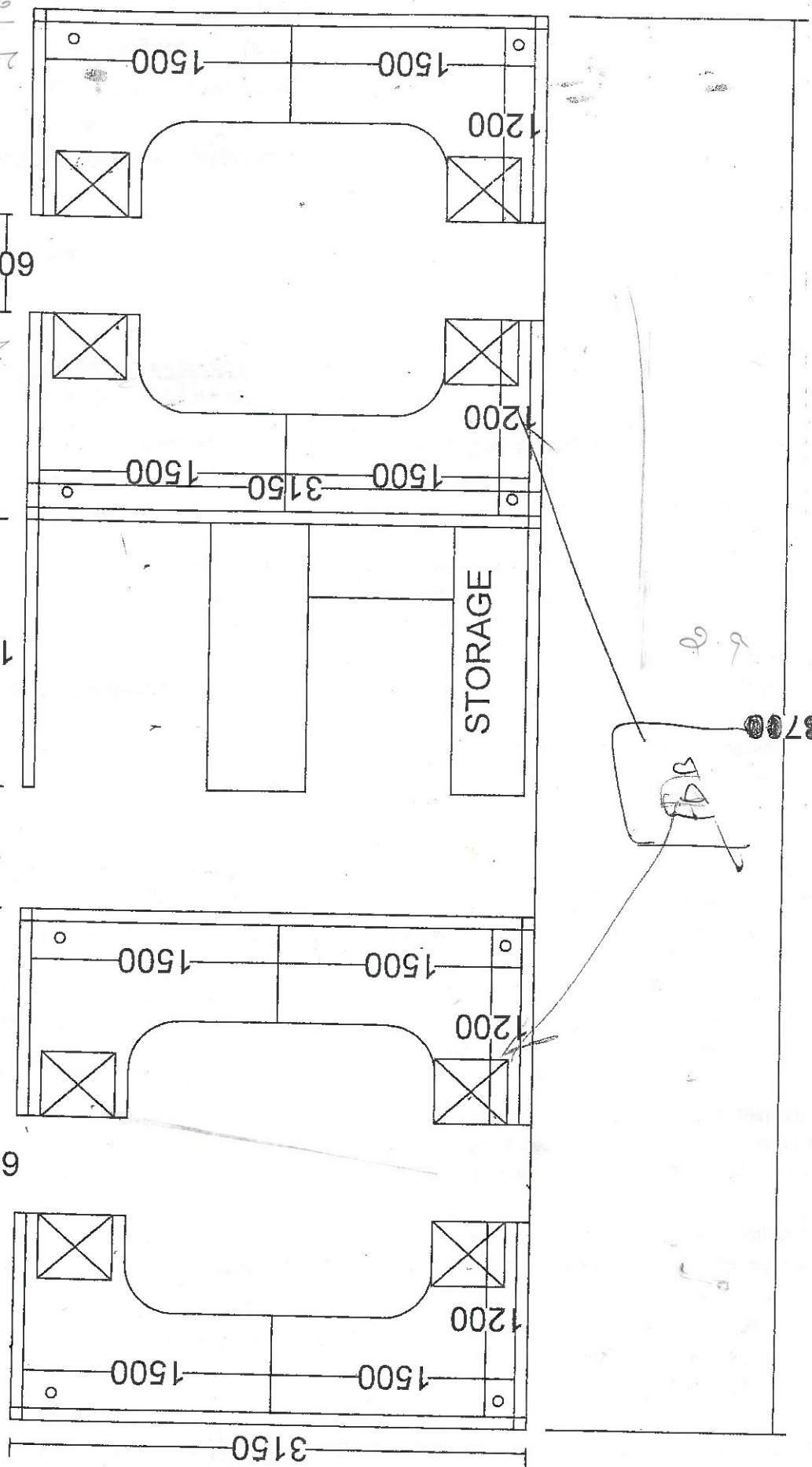
FINANCE

BHARAT HEAVY ELECTRICALS LTD
Electro Porcelains Division
Bangalore 560012
Modular Office Furniture for Finance

Sketch No : WHEC -0001



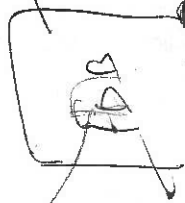
+ IT Dept. Also

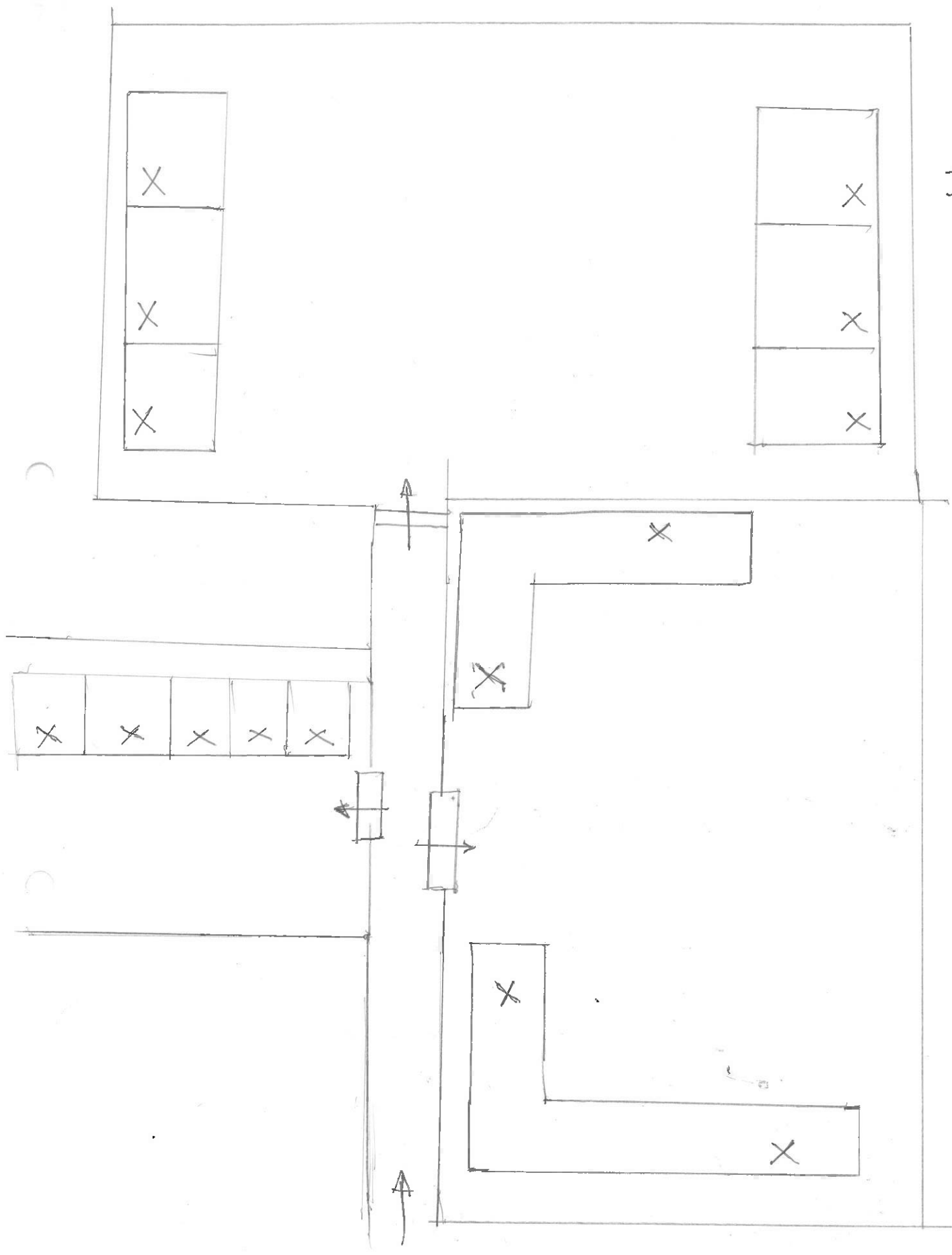


244
600
244
1650
750
600
244

A

B





'X' Power POINTS

I.T. DEPT. LAYOUT

~~Handwritten signature~~
11/4/2018
S. Krishna Kumar